

This drawing supersedes all previously issued drawings. Contractor must check and verify all dimension on the drawings and specify to the architect before proceeding with the work. All drawings and specifications are instruments of service and are the property of the architect, which must be returned at the completion of work.

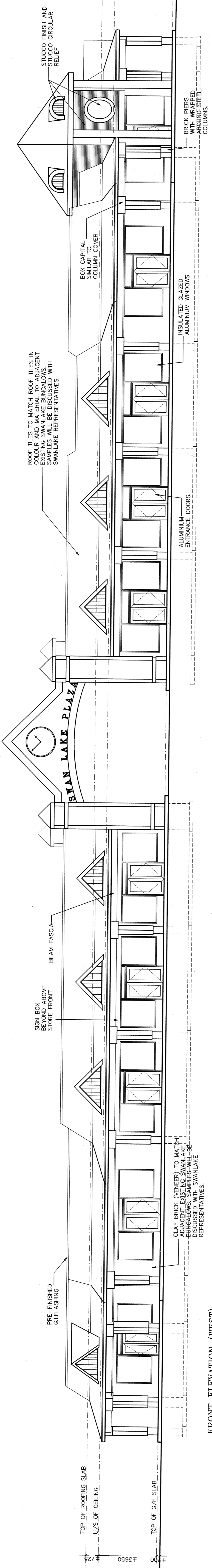
PLOTTER PEN SETTINGS	
COLOR	PEN NO. PEN SIZE (mm)
1. RED	1. 0.15
2. BLACK	2. 0.25
3. GREEN	3. 0.25
4. CYAN	4. 0.3
5. BLUE	5. 0.45
6. MAGENTA	6. 0.45
7. WHITE	7. 0.6
8. LIGHT GRAY	8. 0.1
9. DARK GRAY	9. 0.1
94. D. GREEN	94. 0.1

ISSUED FOR TO: DATE: 30 NOV '05  
 ISSUED FOR: REVIVAL OF EXPIRED BUILDING PERMIT, ON REQUEST FROM OWNERS/CLIENTS SAVOTA HOLDINGS INC., SIGNED BY MR. WALTER TARTAGLIA.

REVISED AS PER	no.	date	by
STRUCT. ELECT./MECH. DRGS. REVISED AS PER MEETING AT TOWN OF MARKHAM. PLANNING, DISCUSSIONS OVER THE PHONE. (AUGUST 22 2002)	3	13 Jun '03	RF
SOUTHWEST CORNER OF THE BUILDING REVISD TO RAISE CORNER AS PER TOWNS COMMENTS AS PER COMMENTS FROM VARIOUS DEPARTMENTS OF TOWN OF MARKHAM. (JULY - AUGUST 14 2002)	2	23.8.2002	SW
all previous issues are superseded			

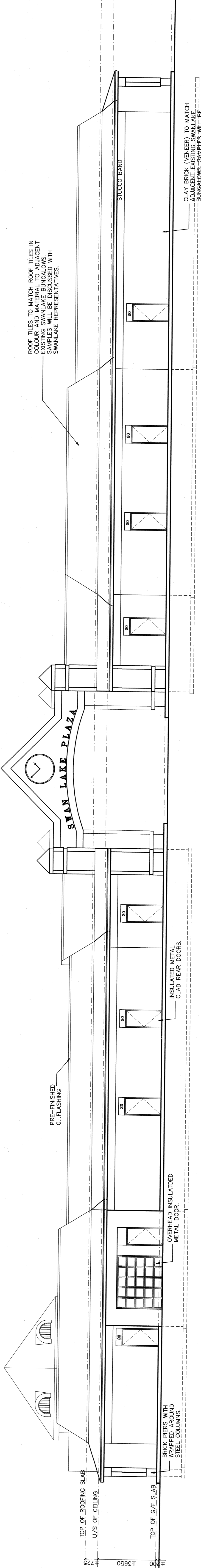
**Suu-dda Patkar**  
 Architectural Corporation  
 5200 FINCH AVE EAST, SUITE #07  
 SCARBOROUGH, ONTARIO, M1S 4Z5  
 TEL: 416-297-0730 FAX: 416-297-4336

PROJECT	
SWANLAKE VILLAGE SHOP 16TH AVENUE, SWANLAKE BVD., MARKHAM	
DRAWING TITLE	
ELEVATIONS	
NOT VALID UNLESS SIGNED BY THE ARCHITECT	TYPE
NORTH	AREA
DRAWN S.W.U.	CHECKED S.P.
DATE APR 2002	SCALE 1"=10'-0"
PROJ. NO. 938-02	DRAWNO A.05



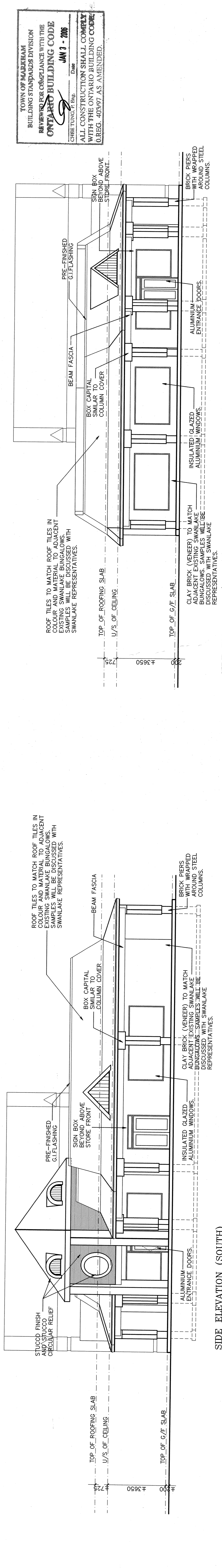
FRONT ELEVATION (WEST)

ALL COLUMNS ALONG WALKWAY ARE COVERED AS SHOWN.



REAR ELEVATION (EAST)

ALL COLUMNS ALONG WALKWAY ARE COVERED AS SHOWN.



SIDE ELEVATION (NORTH)

TOWN OF MARKHAM  
 BUILDING STANDARDS DIVISION  
 REVIEWED FOR COMPLIANCE WITH THE ONTARIO BUILDING CODE  
 CHIEF TOWN CLERK: B. J. JAMES  
 DATE: JUN 3 - 2005  
 ALL CONSTRUCTION SHALL COMPLY WITH THE ONTARIO BUILDING CODE (REG. 40097 AS AMENDED)